



Summ Systems

For Digitized Smart Factories

Integrated Engineering 4.0

Vejen til integrated engineering



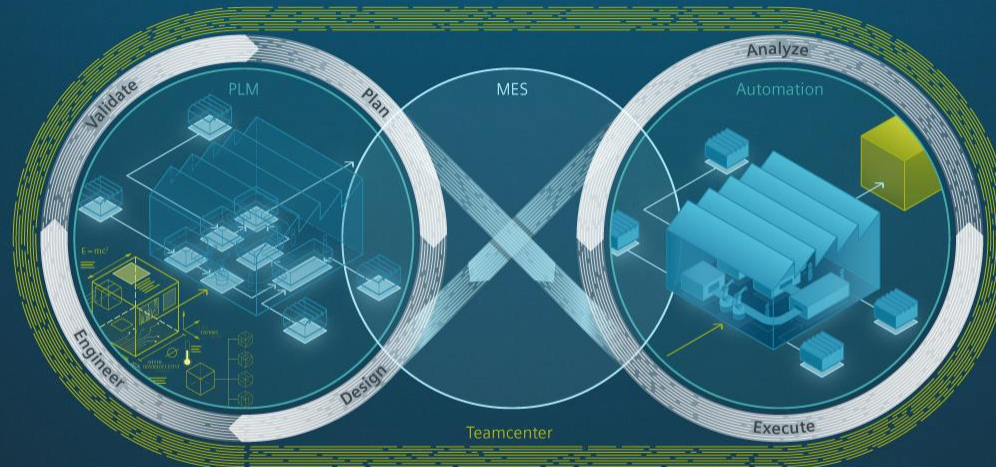
Paradigmskiftet inom tillverkningsföretaget

EN datamodell för alla tekniska områden/processer

“BOP” Bakgrund

- Planering/krav
- Konstruktion
- Simulering
- Prod.balansering
- Risk hantering

IBS QMS: Closed Loop Quality



Alla tekniska områden i
EN data modell

“BOP” Genomförande

- Order-hantering
- Risk-hantering
- Ledning/styrning
- Tillverkning
- Spårbarhet

- Office in Linköping
Gothenburg,
Sandviken and Oslo



- **Startup in Denmark
from summer 2017,
Roskilde**



- 26 people



- All employee have a
design- and/or
manufacturing
engineer background



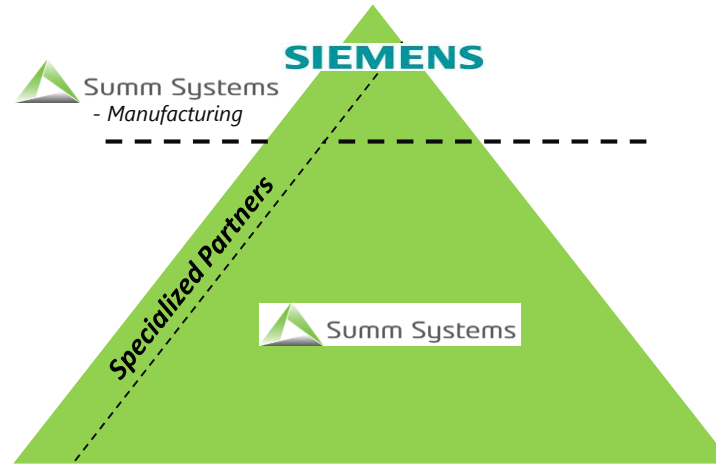
- Specialistpartner to
Siemens PLM



- Close cooperation with
Siemens DF, Nordics
and other OEM's
within advanced
automation



Go-to-market model – Nordic



teamster

TechROI
KONSULTINGENJÖRER

swerea
swedish research

SEMCON

JIGSAW
ROBOTICS AND AUTOMATION

MODIG
S W E D E N



VERKTYGSMEKANO



Westinghouse

sapa: PARTNERTECH



VERTIV™

Tooltec



SAAB



BHARAT FORGE
KILSTA



KONGSBERG
AUTOMOTIVE

TRESTAD
LASER AB



Rolls-Royce®

APT
AUTOMATION - PRESSES - TOOLING



Alteams Group

BOFAB

LKN



swisslog



BHARAT FORGE
KILSTA

MEKVERKEN
tool ab



HB Mekaniska

AB Produktions Service APS

DEVEX XR AB
BRANTHEIM

alTran



CAMPOSTPRO
SWEDEN AB

CeeMVe Mekaniska Verkstad AB



CHALMERS

CJ Automotive



DEVEX
MEKATRONIK

Barilla



EMERSON
Process Management

Autotec
Fuji Autotech AB



HÖGSKOLAN
I SKÖVDE

HSE GROUP
HSF i Vimmerby AB

Intermekano Tools

VICURA
Delivering driveline technologies

JOAB

LAMECO
AB

LEAX
ARKIVATOR
TELECOM



WILHELM
HAGLUNDS
GYMNASIUM

MVG

Motala Verkstad Group

SKG
SVENSK TRYCK&GLUTNING

P-B-H TEKNIK AB

ALSTOM

Rapid
Reduce • Reuse • Recycle

Tau
BERÄKNING

THORSMAN

TRELLEBORG

plastal

VIRTUAL
manufacturing.

TEKNISKA HÖGSKOLAN
HÖGSKOLAN I JÖNKÖPING

SWE FOG

SANDVIK



Siemens PLM Software Solution Partner

Summ Systems

AGILITY
Subsea Fabrication

aibel



biobe

EKER DESIGN



Laerdal
helping save lives

aquamarine
SUBSEA SOLUTIONS



DYNATEC **DRESSER-RAND**
Business



MJØS
METALLVAREFABRIKK AS

FFI Forsvarets
forskningsinstitutt

FMC Technologies

Nammo

BW Offshore

molstad
modell&form

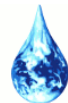
NAXYS

Nor Sap



otivio

OneSubsea
A Cameron & Schlumberger Company



RAINPOWER

Spetals verk



Skriverform a.s



SEC Scandinavian Engineering Corporation

SNO
DESIGNSTUDIO

ULEFOS
CAFFELLEN GROUP

JØMNA BRUG
NORWEGIAN DOORS

GRÆSDAL GLASS

schenckprocess

TECHNIUM



Systor

Seasafe Transport A/S

Keep-it
TECHNOLOGIES

N A

RING MEKANIKK

ASH GROUP

TYSSE

Tech
DAMPER

DEC as
DESIGN - ENGINEERING - CONSULTING



Siemens PLM Software Solution Partner



So, let's jump into today's topic....

10.00 Advanced Manufacturing — a key part of Integrated Engineering

Learn how Advanced Manufacturing can be implemented using Digital Twins, simulations and integrated software concepts. See why design and simulations of machines, production lines and whole plants, including mechatronics and robotics, are important cornerstones of your future automation projects. Get inspiration to your own digitalization strategy via selected Nordic customer cases.



Automotive &
Transportation



Digital Manufacturing



Marine



Energy

Digital Production Optimization

- Advanced Manufacturing — a key part of Integrated Engineering

Integrated Engineering 4.0
Vejen til integrated engineering



Industrial Skills for Design & Manufacturing Excellence



Siemens PLM Software Solution Partner



urban.johansson@summsystems.com
+46 70 616 20 43

Team Leader – Digital Production Optimization

- Solution architect/advisor
- Project leader/lead engineer

Background

- Manager of Design Engineering & Development
 - *Sandvik Materials Technology*
- Senior Automation Engineer
 - *Midroc Automation*



Digital Production Optimization

Advanced Manufacturing



- MOM
- MES
- QMS
- Automation
- Maintenance
- Sustainability
- IT Security
- WLAN
- IWLAN



- Machine Learning
- Advanced Analytics
- Artificial Intelligence
- Predictive Maintenance

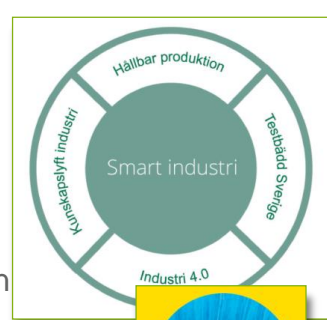
- Operating
- Monitoring
- Smart Alarm Handling
- Optimized Dashboards



- Edge Computing
- Virtual Commissioning

- Collaboration
- Startups

- Engineering
- Best Practice
- Standardization
- Integration Strategy
- Construction Database
- Version Handling
- Backup Management
- Asset Management
- Lifecycle Management
- Energy Management



- Discrete
- Process
- Hybrid

- Pacing
- Planning
- Scheduling
- Optimization
- Parameter Registry
- Process Safety SIL
- Machine Safety PL
- Safety Matrix
- Remote Support
- Local Support
- QR Codes
- RFID
- SCADA
- DCS

- CAD
- CAM
- PLC
- CNC

- Big Data
- Production Data
- Cloud Integration
- Tracking
- Traceability
- Reporting
- Process historian
- High speed data logging
- Video & data in sync

- Simulation
- Digital Twins
- 3D Scanning
- 3D Walk Through
- Augmented Reality
- Testing
- Training
- Validation
- Verification
- Inspection

- Instructions
- SOP
- Manuals
- Drawings
- Technical Files
- Operational Excellence

Plant W

- Production Line W1
- Production Line W2
- Production Line W3
- Production Line W4
- Production Line W5
- Production Line W6

Plant X

- Production Line X1
- Production Line X2
- Production Line X3
- Production Line X4
- Production Line X5

Plant Y

- Production Line Y1
- Production Line Y2
- Production Line Y3
- Production Line Y4

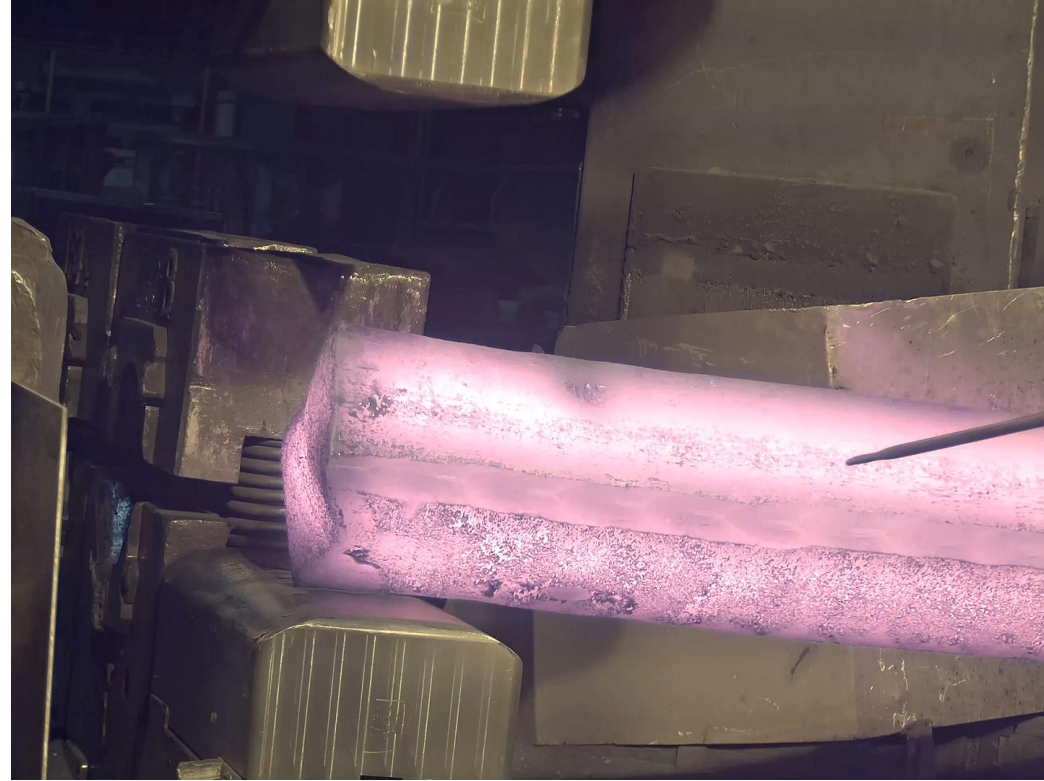
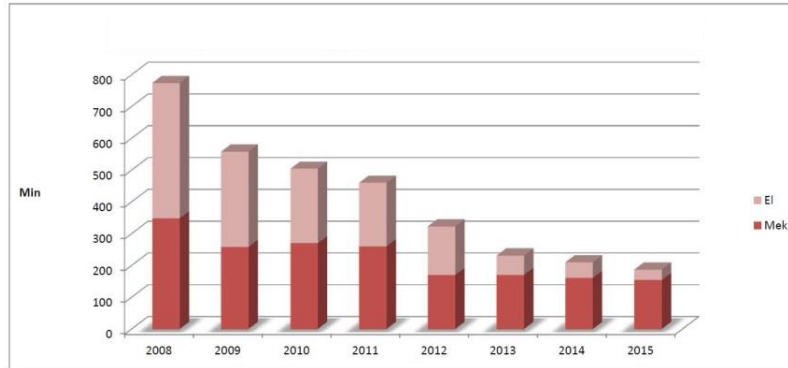
Plant Z

- Production Line Z1
- Production Line Z2
- Production Line Z3

@ The Forging Plant, Sandvik Materials Technology, Sweden

Reduction of downtime by **75%** = 4,2M EUR / Year

Ar	Mek	EI	tot
2008	348	426	774
2009	258	300	558
2010	270	234	504
2011	260	200	460
2012	170	153	323
2013	170	61	231
2014	161	49	210
2015	154	33	187



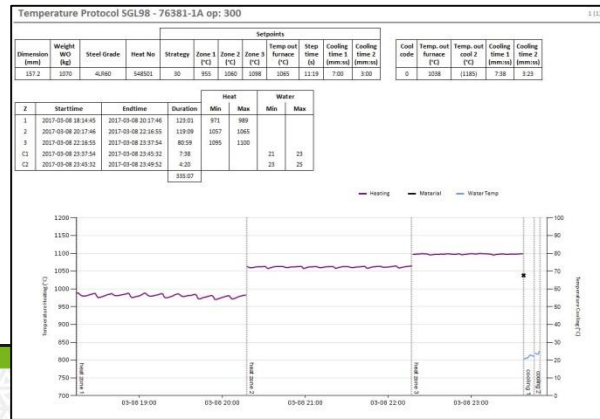
@ The Forging Plant, Sandvik Materials Technology, Sweden

Success factors to reduce downtime by 75%:

- Standardization, Automation & Industrial IT policy
- Increased level of automation in a common redundant & failsafe control system that can handle operating/ monitoring and process/machine safety for all lines, cells and machines in the plant
- Digital twin for the control system
- Full traceability at individual level
- High speed data logging system synchronized with video camera system
- Smart Alarm Hiding, Smart Alarm Statistics
- All diagnostic data for sensors, failures, alarms etc. easy available in the control system
- All documentation easy available in the control system e.g. instructions, electrical drawings, maintenance instructions
- One buffered connection to the MES-level for recipes, parameters etc

@ The Forging Plant, Sandvik Materials Technology, Sweden

Full traceability

Tracking Up!

Arbetsorder nr: 78585

Återstående tid: 26:25:48

Börvärde (level 2)

Sålväret	41.800
Bredd Ø	157 mm
Antal bitar	0 st
Charge nummer	5450501 nr
Värmslag strategi	76381-1A
Återstående bitar	0
Styckvikt	1070 kg
Längd	1050 mm
Temp.Börvärde -Z1	955 °C
Temp.Börvärde -Z2	1060 °C
Temp.Börvärde -Z3	1090 °C
Kylning 1	430 s
Kylning 2	160 s
Material temperatur	1095 °C
Operation	300 s
Steg tid	679 s

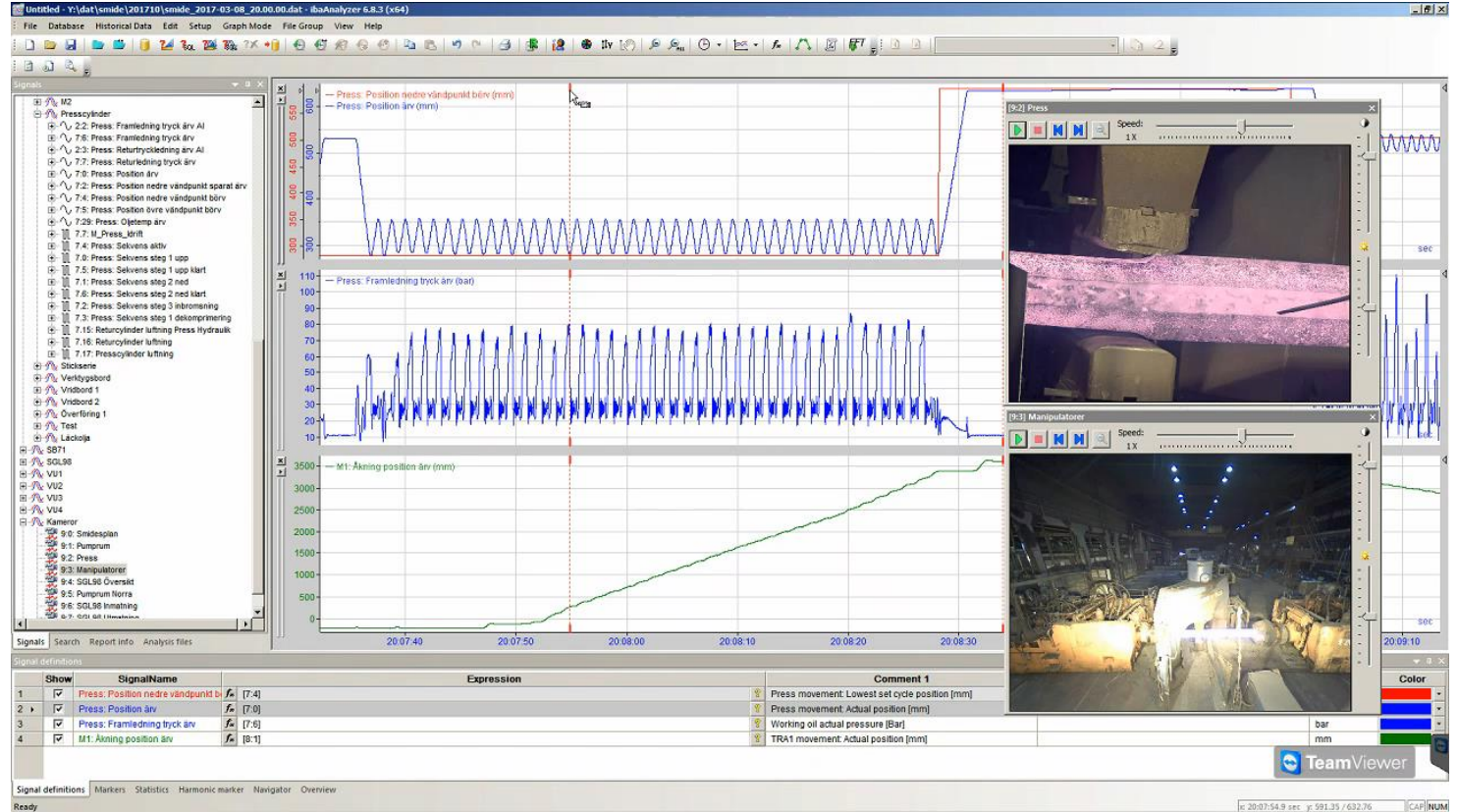
Årvärden

Arvetsändkod	0	0-OK=0 -skuret
Kylkod	0	
Färgkod (arbetsorder)	1	
Uppvärm utikt	1500 kg	
Uppvärm längd	7298 mm	
Temperatur -BT135	0,00 °C	
Temperatur -BT136	0,00 °C	
Temperatur -BT137	0,00 °C	
Kyltnedel 1 tid	0 s	
Kyltnedel 2 tid	0 s	

SKRIVPLATS

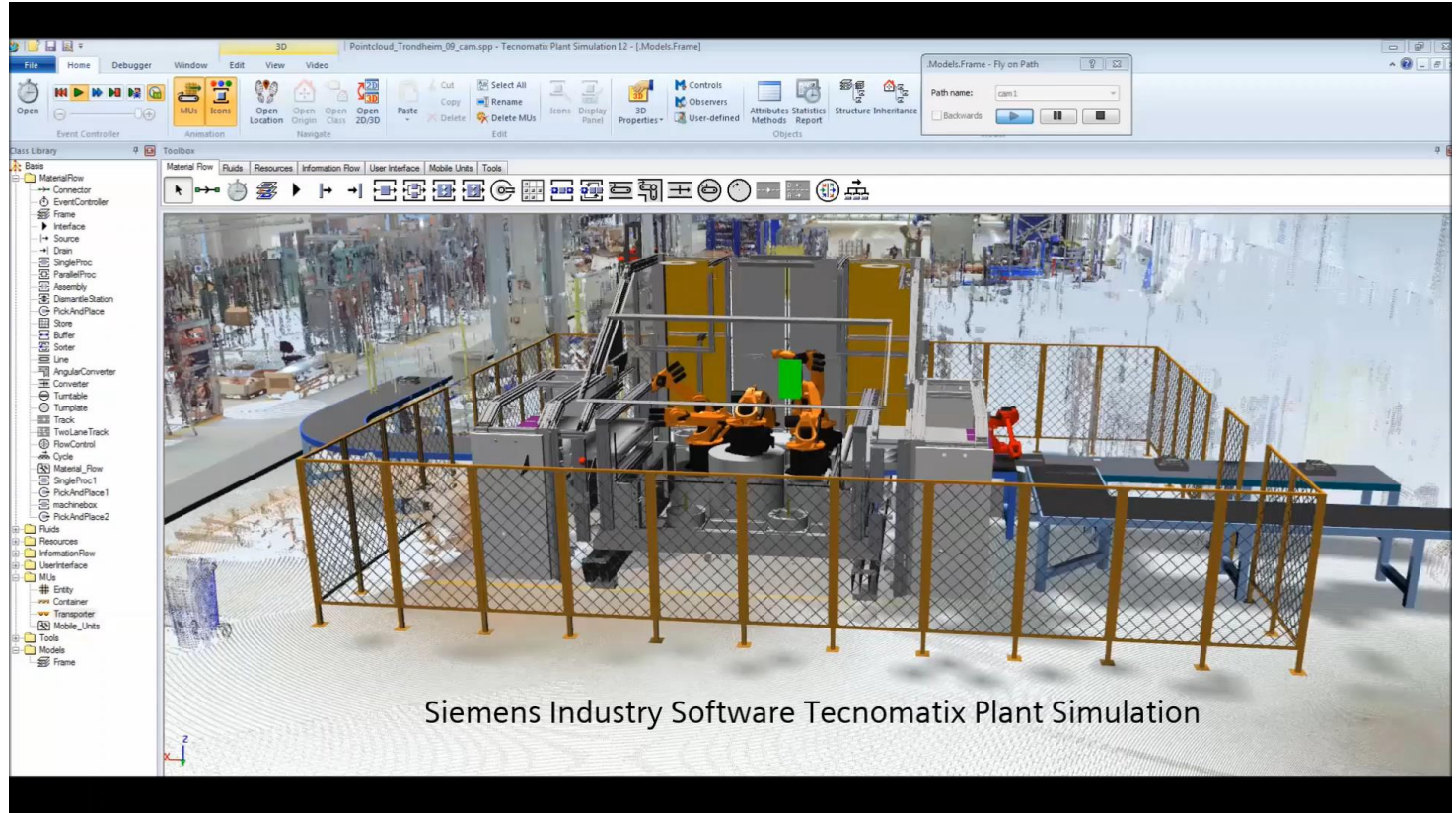
@ The Forging Plant, Sandvik Materials Technology, Sweden

Video in sync
with high speed
data logging



@ The Forging Plant, Sandvik Materials Technology, Sweden

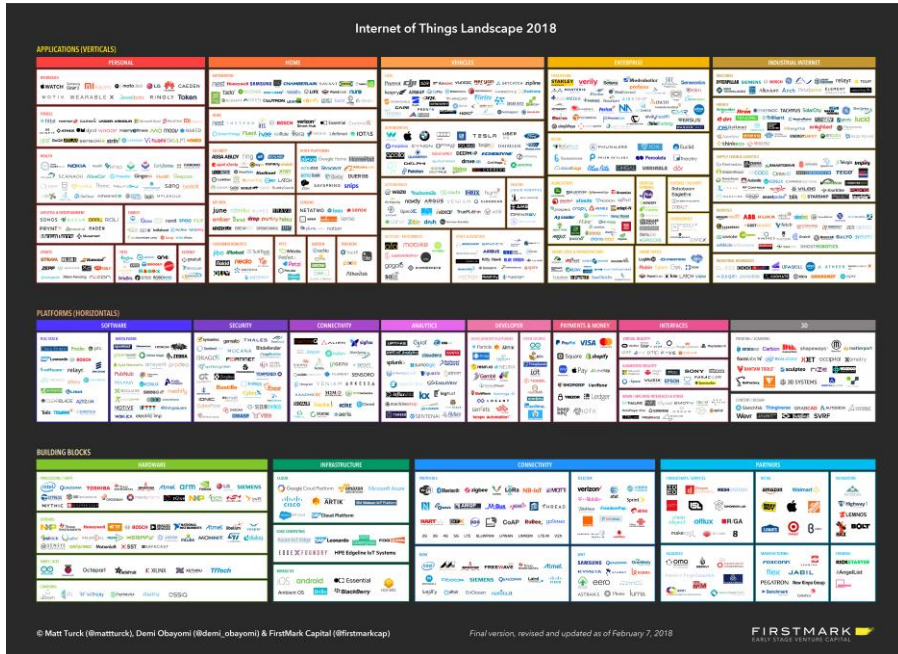
Next step no 1:
Tecnomatix
Plant Simulation



Siemens Industry Software Tecnomatix Plant Simulation

@ The Forging Plant, Sandvik Materials Technology, Sweden

Next step no 2:
Big Data and AI



Tecnomatix Plant Simulation, live demo